

# Runway 9/27 Reconstruction Duluth International Airport (DLH)

## Project Update

SEH NO. DULAI 135455 and 139204

**October 13, 2017 | Project Update No. 11**

### Project Contacts:

**Duluth Airport Authority**  
Director of Operations  
Blaine Peterson  
218.625.7767 (Office)  
bpeterson@duluthairport.com

**Short Elliott Hendrickson Inc.**  
Project Manager  
Benita Crow, PE  
651.919.6677 (Cell)  
[bcrow@sehinc.com](mailto:bcrow@sehinc.com)

**Short Elliott Hendrickson Inc.**  
Resident Project Representative (RPR)  
Ryan Jones, PE  
218.343.2777 (Cell)  
rjones@sehinc.com

### Introduction:

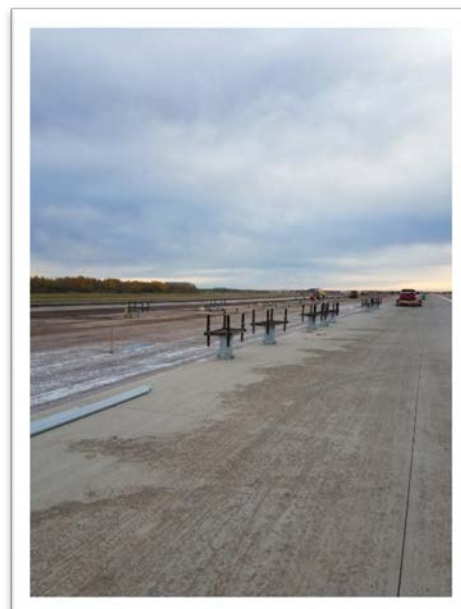
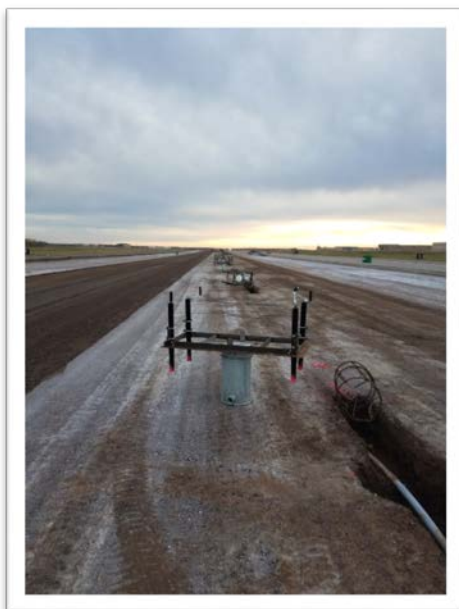
This is the 11th weekly newsletter for the Runway 9/27 Reconstruction project at the Duluth International Airport (DLH). The purpose of these weekly newsletters is to provide updates throughout the project regarding construction impacts, runway closures, temporary runway conditions, and other information as needed. Earlier versions of the newsletter are available upon request.

### Runway 9/27 Construction Progress (October 8 – October 14)

#### Construction Progress

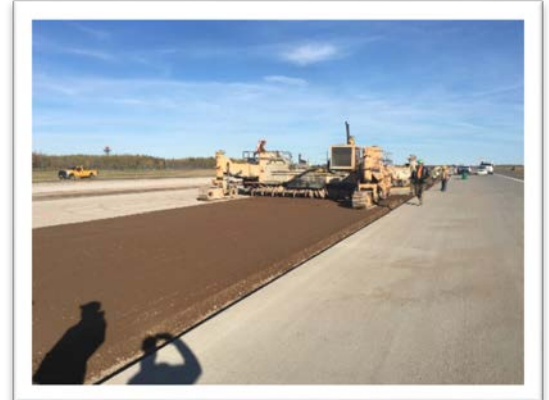
Improved weather conditions allowed for a more productive week of construction. The primary work elements this week were installation of electrical cans for in-pavement lighting and placement of the Cement Treated Base (CTB).

Light Can Installation:





Cement Treated Base (CTB) Production and Placement:



## Runway Operations

**Runway 9/27 will remain closed until approximately early November to allow for the middle 6,200 feet of the runway to be reconstructed.**

Taxiway closures during this same timeframe consist of Taxiway A west of the Cirrus Production Ramp and connecting Taxiways A1, A3, and A5. (Taxiway A between Taxiway A1 and the Cirrus Production Ramp will be open for helicopter operations only.) On the east end of the airfield, Taxiways E1, E2, the East Runup Area, and the Runway 27 Approach Taxiway are also closed.

Taxiway A2/B is closed.

Runway 3/21 and Taxiway C will be used exclusively during this time.

## Next Week (October 14 – October 21): Runway 9/27 Closed

The balance of the CTB will be completed, as well as installation of all in-pavement electrical light cans and conduit. Following completion of the CTB, the batch plant needs to be reconfigured to produce concrete pavement. This will take approximately two days, and then concrete paving will begin. It is anticipated that the first load of concrete pavement will be produced on Monday, October 16, assuming suitable weather conditions. Material will continue to be hauled onto the site. Lavaque Road will be the primary access point for most hauling activities to the site.

## Schedule Updates:

Weather conditions and contractor operations have resulted in the construction schedule falling behind by a few days. Construction was anticipated through the end of October, but may potentially extend into the first week of November. If weather conditions are conducive, it is possible that some of the delay could be made up to allow a completion time closer to the original schedule. There will be construction elements that will be completed once Runway 9/27 is reopened under nighttime runway closures, such as sawcut grooving, pavement marking, and other remaining work elements as needed. To try to remain close to the original schedule, construction work may extend into the evening hours and overnight, and on Saturdays and Sundays through the end of the month.

Project updates and photos will continue to be provided on a weekly basis using this newsletter format. In addition to these newsletters, project updates will be given at the weekly tenant meetings in the Terminal Building, Second Floor Conference Room, on Tuesdays at 9:00 AM.