

# Runway 9/27 Reconstruction Duluth International Airport (DLH)

## Project Update

SEH NO. DULAI 135455 and 139204

**October 6, 2017 | Project Update No. 10**

### Project Contacts:

**Duluth Airport Authority**  
Director of Operations  
Blaine Peterson  
218.625.7767 (Office)  
bpeterson@duluthairport.com

**Short Elliott Hendrickson Inc.**  
Project Manager  
Benita Crow, PE  
651.919.6677 (Cell)  
[bcrow@sehinc.com](mailto:bcrow@sehinc.com)

**Short Elliott Hendrickson Inc.**  
Resident Project Representative (RPR)  
Ryan Jones, PE  
218.343.2777 (Cell)  
rjones@sehinc.com

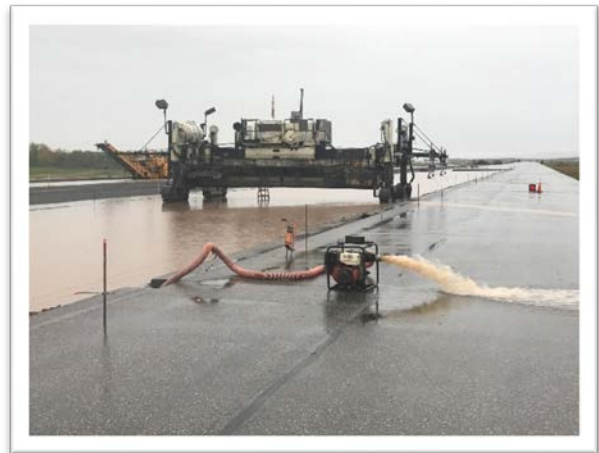
### Introduction:

This is the tenth weekly newsletter for the Runway 9/27 Reconstruction project at the Duluth International Airport (DLH). The purpose of these weekly newsletters is to provide updates throughout the project regarding construction impacts, runway closures, temporary runway conditions, and other information as needed. Earlier versions of the newsletter are available upon request.

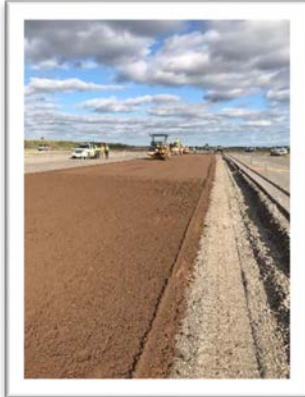
### Runway 9/27 Construction Progress (October 1 – October 7)

#### Construction Progress

Rain continues to make the construction progress challenging. Several inches of rain fell over the weekend and early part of the week, which slowed down construction in order to pump water from the runway footprint. Once conditions improved, work consisted of placement of aggregate base, final preparation of the batch plant area, fine grading of the aggregate, and initiation of the Cement Treated Base (CTB).



Quality Control / Quality Assurance (QC/QA) testing was completed on the aggregate base, verifying the material meets the required FAA gradations, compaction requirements, and other required specifications.



## Runway Operations

**Runway 9/27 will remain closed until approximately the end of October to allow for the middle 6,200 feet of the runway to be reconstructed.**

Taxiway closures during this same timeframe consist of Taxiway A west of the Cirrus Production Ramp and connecting Taxiways A1, A3, and A5. (Taxiway A between Taxiway A1 and the Cirrus Production Ramp will be open for helicopter operations only.) On the east end of the airfield, Taxiways E1, E2, the East Runup Area, and the Runway 27 Approach Taxiway are also closed.

Taxiway A2/B is now closed.

Runway 3/21 and Taxiway C will be used exclusively during this time.

## Next Week (October 8 – October 14): Runway 9/27 Closed

The main work element will be placement of the CTB on both the west and center sections of the runway. It is expected that the CTB will be completed by the end of the week, assuming suitable weather conditions. Other work elements will include continued fine grading of the aggregate base in advance of the CTB placement and electrical conduit and cable, as well as can placement for the in-pavement lighting. Material will continue to be hauled onto the site. Lavaque Road will be the primary access point for most hauling activities to the site.

## Schedule Updates:

In spite of subgrade corrections, the inclusion of the CTB, and weather delays, it is still anticipated that Runway 9/27 will remain closed through the end of October to accommodate all construction as planned. The concrete paving is expected to begin once the CTB is complete, and currently anticipated for the week of October 16. To ensure readiness for this work, construction work may extend into the evening hours and overnight, and on Saturdays and Sundays over the next two to three weeks.

Project updates and photos will continue to be provided on a weekly basis using this newsletter format. In addition to these newsletters, project updates will be given at the weekly tenant meetings in the Terminal Building, Second Floor Conference Room, on Tuesdays at 9:00 AM.