

Runway 9/27 Reconstruction Duluth International Airport (DLH)

Project Update

SEH NO. DULAI 135455 and 139204

October 27, 2017 | Project Update No. 13

Project Contacts:

Duluth Airport Authority
Director of Operations
Blaine Peterson
218.625.7767 (Office)
bpeterson@duluthairport.com

Short Elliott Hendrickson Inc.
Project Manager
Benita Crow, PE
651.919.6677 (Cell)
bcrow@sehinc.com

Short Elliott Hendrickson Inc.
Resident Project Representative (RPR)
Ryan Jones, PE
218.343.2777 (Cell)
rjones@sehinc.com

Introduction:

This is the 13th weekly newsletter for the Runway 9/27 Reconstruction project at the Duluth International Airport (DLH). The purpose of these weekly newsletters is to provide updates throughout the project regarding construction impacts, runway closures, temporary runway conditions, and other information as needed. Earlier versions of the newsletter are available upon request.

Runway 9/27 Construction Progress (October 22 – October 28)

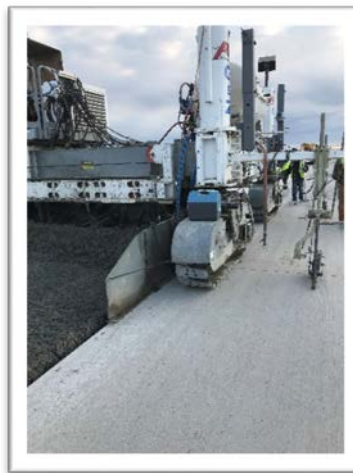
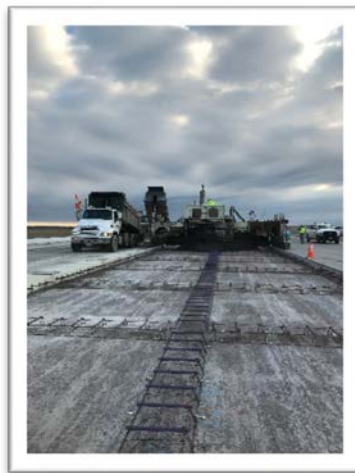
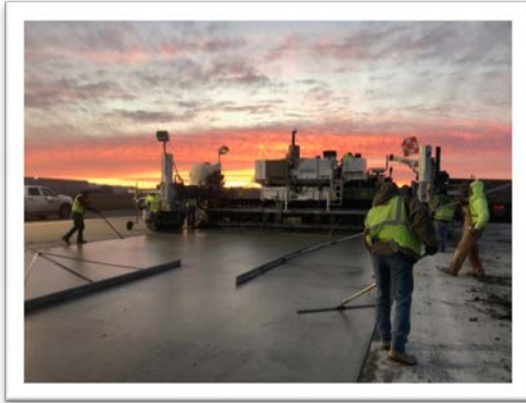
Construction Progress

The weather isn't cooperating with rain, wind, snow and cold temperatures. There are five paving lanes, each 30 feet in width, and the contractor is in the process of paving the fifth and final lane. Electrical installation of centerline lights and touchdown zone lighting continued throughout the past week. The contractor has placed approximately 33,000 cubic yards of concrete and is working on over 345 in-pavement lights. The colder temperatures are requiring the newly placed concrete to be covered in plastic sheeting to maintain temperature and help curing.

Light Can Installation and Weather Challenges:



Portland Cement Concrete Production and Placement:



Runway Operations

Runway 9/27 will remain closed until approximately early November to allow for the middle 6,200 feet of the runway to be reconstructed.

Taxiway closures during this same timeframe consist of Taxiway A west of the Cirrus Production Ramp and connecting Taxiways A1, A3, and A5. (Taxiway A between Taxiway A1 and the Cirrus Production Ramp will be open for helicopter operations only.) On the east end of the airfield, Taxiways E1, E2, the East Runup Area, and the Runway 27 Approach Taxiway are also closed.

Taxiway A2/B is closed.

Runway 3/21 and Taxiway C will be used exclusively during this time.

Next Week (October 29 – November 4): **Runway 9/27 Closed**

Concrete paving is expected to be completed early in the week, if weather allows. Light can installation is also anticipated to be completed early in the week, with installation of the fixtures and cable for the centerline and touchdown zone lights continuing throughout the week. Bituminous paving of the shoulders and blast pad is planned for mid-week. Forecasted cold temperatures and precipitation may impact construction progress.



DULUTH INTERNATIONAL AIRPORT

Closer to everywhere.



Schedule Updates:

Challenging weather conditions, including the snow event late last week, have impacted construction progress. Construction is currently about one week behind schedule. There will be construction elements that will be completed once Runway 9/27 is reopened under periodic runway closures, such as sawcut grooving, pavement marking, and other remaining work elements as needed. To try to remain close to schedule and take advantage of any favorable weather conditions, construction work may extend into the evening hours and overnight, and on Saturdays and Sundays into the first half of November.

Project updates and photos will continue to be provided on a weekly basis using this newsletter format. In addition to these newsletters, project updates will be given at the weekly tenant meetings in the Terminal Building, Second Floor Conference Room, on Tuesdays at 9:00 AM.