

Runway 9/27 Reconstruction

Duluth International Airport (DLH)

Project Update

SEH NO. DULAI 135455 and 139204

September 1, 2017 | Project Update No. 5

Project Contacts:

Duluth Airport Authority
Director of Operations
Blaine Peterson
218.625.7767 (Office)
bpeterson@duluthairport.com

Short Elliott Hendrickson Inc.
Project Manager
Benita Crow, PE
651.919.6677 (Cell)
bcrow@sehinc.com

Short Elliott Hendrickson Inc.
Resident Project Representative (RPR)
Ryan Jones, PE
218.343.2777 (Cell)
rjones@sehinc.com

Introduction:

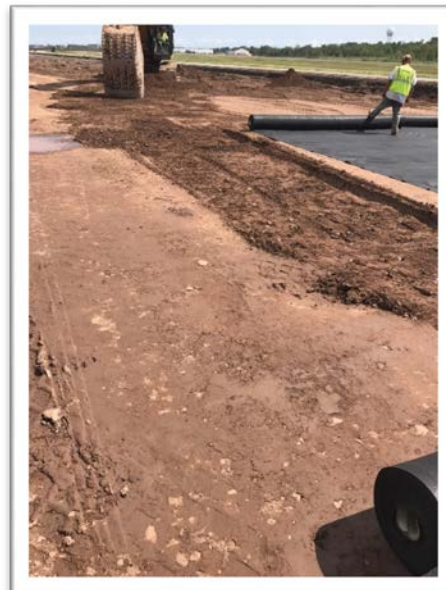
This is the fifth weekly newsletter for the Runway 9/27 Reconstruction project at the Duluth International Airport (DLH). The purpose of these weekly newsletters is to provide updates throughout the project regarding construction impacts, runway closures, temporary runway conditions, and other information as needed. Earlier versions of the newsletter are available upon request.

Runway 9/27 Construction Progress (August 27 – September 1)

Construction Progress

Runway 9/27 continued to operate with a displaced threshold to Runway 9.

Subgrade corrections continued over the last 1,500 feet of the west end of the runway. The subgrade beneath the pavement was wet, likely due to August rainfall events, so portions of the saturated soils were removed and replaced with clean and dry material. Geotextile fabric was placed below the dry material.



Placement of aggregate base began and is expected to continue through the Labor Day Weekend.



Runway Operations for Phase 2 (through 4:00 PM on Labor Day, September 4)

The following declared distances remain applicable for Phase 2.

**Runway 9/27 Reconstruction - Phase 2
Declared Distances**

Declared Distance	Runway 9	Runway 27
Takeoff Distance Available (TODA)	8,000 feet	7,200 feet
Takeoff Run Available (TORA)	8,000 feet	7,000 feet
Accelerate Stop Distance Available (ASDA)	8,000 feet	7,000 feet
Landing Distance Available (LDA)	7,000 feet	7,000 feet

The following instrument approaches remain available during Phase 2:

- Runway 27 RNAV
- Circling approaches to Runway 9

Runway Operations for Phase 1B (Beginning at 4:00 PM on Labor Day, September 4)

Work will commence on Phase 1B on Tuesday, September 5. Preparations for runway closure will begin on Monday, September 4th.

Runway 9/27 will be closed beginning at 4:00 PM on Monday, September 4th. The runway will remain closed until approximately the end of October to allow for the middle 6,200 feet of the runway to be reconstructed.

Taxiway closures during this same timeframe consist of Taxiway A west of the Cirrus Production Ramp and connecting Taxiways A1 and A3. There will be periodic closures of Taxiway A2/B for hauling activities. Closure of Taxiway A2/B will be coordinated with tenants on the north side of the airfield to minimize impacts to their operations.

Runway 3/21 and Taxiway C will be used exclusively during this time, together with the taxiway system east of Taxiway C.



Next Week (September 3 – September 9): **Runway 9/27 Closed**

Work will begin on the middle section of the runway. The work is expected to include demolition and removal of the existing concrete pavement, together with pavement milling of a portion of the bituminous shoulders. Final placement and compaction of aggregate base will occur on the Phase 2 area. Cans, cable and conduit associated with the in-pavement centerline and touchdown zone lighting will continue to be installed within the west section of the runway, working east.

Schedule Updates:

With subgrade corrections and the inclusion of the Cement Treated Base (CTB) and required cure time, it is anticipated that Runway 9/27 will remain closed through the end of October to accommodate all construction.

Material hauling and placement of the CTB is expected to begin on or around the week of September 11, with concrete pavement operations planned to begin mid to late September.

Project updates and photos will continue to be provided on a weekly basis using this newsletter format. In addition to these newsletters, project updates will be given at the weekly tenant meetings in the Terminal Building, Second Floor Conference Room, on Tuesdays at 9:00 AM.