

Thanks for being part of the DLH community!



Runway 9/27 Reconstruction: Phase 3

Duluth International Airport (DLH)

Project Newsletter #1

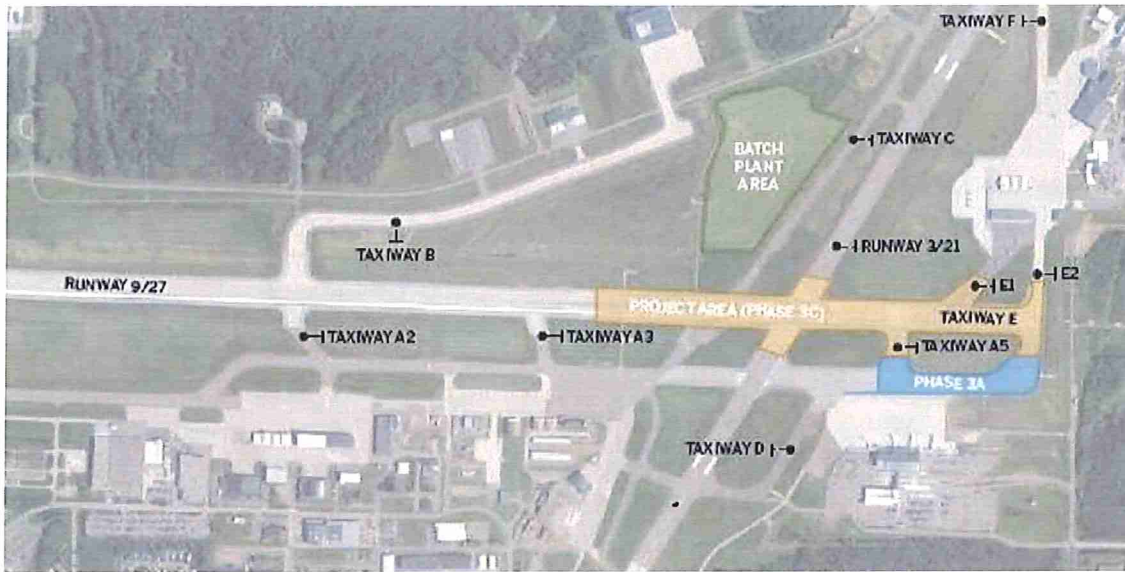
Introduction

This is the 1st weekly newsletter for the third phase of the Runway 9/27 Reconstruction project at the Duluth International Airport (DLH). The purpose of the weekly newsletters will be to provide updates throughout the project regarding construction impacts, runway closures, temporary runway conditions, and other information as needed.

Runway 9/27 Construction Progress

The preliminary work leading up to construction has consisted of preparing the batch plant site on the northeast side of the field, field office installation, utility locates, preliminary survey work, and a temporary construction gate installation on the east side of the airport near the Phase 3A area. The contractor on the project is Shafer Contracting from Shafer, Minnesota. They are currently gearing up to formally begin Phase 3A on May 20th.

Project Area:



Batch plant area preparation:



Runway/Taxiway Operations - Phase 3A

Runway 9/27 and Runway 3/21 will be open full length for the duration of Phase 3A. Taxiway closures consist of Taxiway A east of Taxiway A5, and Taxiway E2 south of Taxiway E.

Next Week Preview: May 19th - May 25th

After all initial preparatory work has been completed, Taxiway A east of Taxiway A5 and Taxiway E2 south of Taxiway E will be closed and barricades installed. Also expected to occur is pavement removal, grading work, and initial electrical work items.

Schedule Updates

Phase 3 will consist of 5 sub-phases, with the first one commencing on May 20, 2019. More detailed information for each phase including airfield status, closures, and construction progress will be available as we approach each one in the form of the weekly newsletters, tenant meetings, and by request. Phases 3A - 3D will take place in succession, followed by a month long break before Phase 3E begins. The schedule will generally follow the following duration:

Phase 3A: Taxiway A work (30 days)

Phase 3B: Runway 27 Displaced Threshold Setup (3 days)

Phase 3C: Runway 9/27 and Taxiway A5 (60 days)

Phase 3D: Removal of Displaced Threshold (3 days)

Phase 3E: Sawcut Grooving (12 days)

For immediate information on the current airfield status, always check current NOTAM's before you fly.

Project Contacts:

Duluth Airport Authority

Director of Operations

Blaine Peterson

218.625.7767 (Office)

bpeterson@duluthairport.com

Short Elliot Hendrickson, Inc.

Project Manager

Benita Crow, PE (MN, WI)

651.919.6677 (Cell)

bcrow@sehinc.com

Short Elliot Hendrickson, Inc.

Project Engineer

Shawn McMahon, PE (MN, WI, IA, SD)
651.925.7541 (Cell)
smcmahon@sehinc.com



**DULUTH
INTERNATIONAL
AIRPORT**

Travel Globally. Fly Locally.



Duluth International Airport
(218) 727-2968
daa@duluthairport.com

[unsubscribe from this list](#) [update subscription preferences](#)
