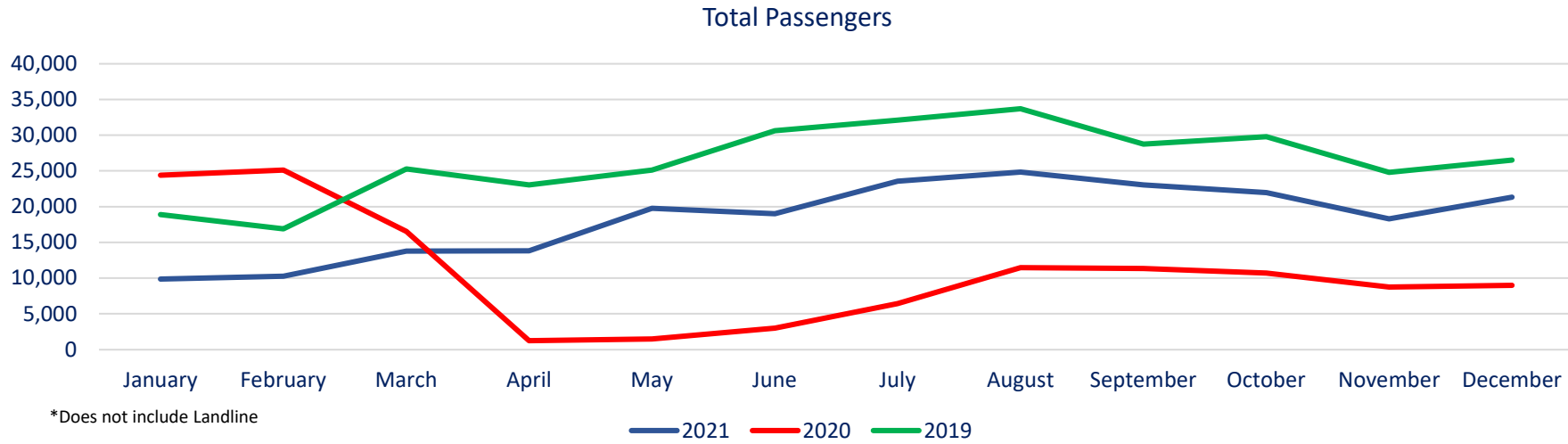


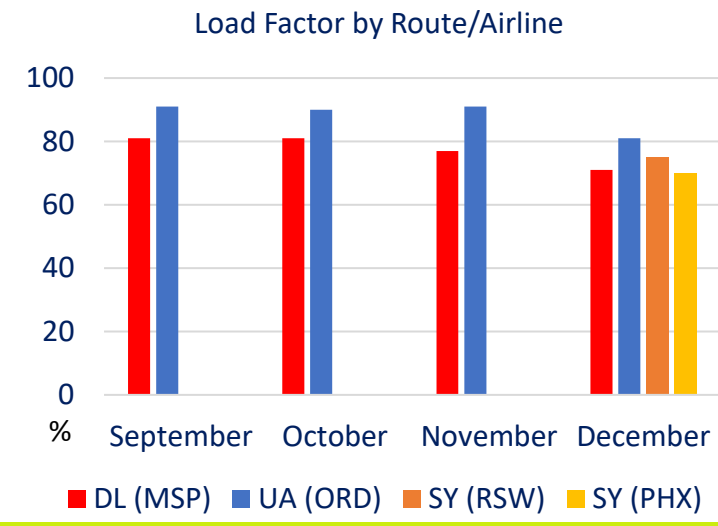
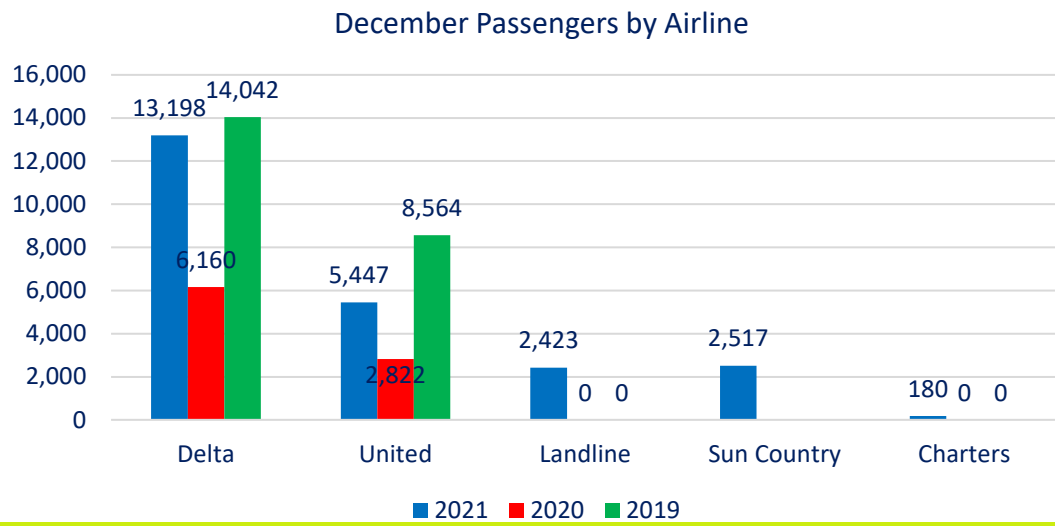
Duluth International Airport Air Service Update

DAA Board Meeting
18JAN22

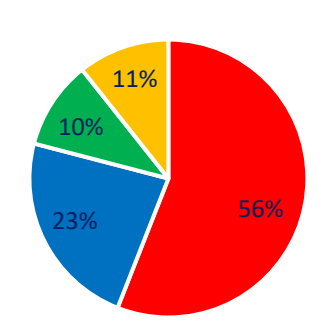




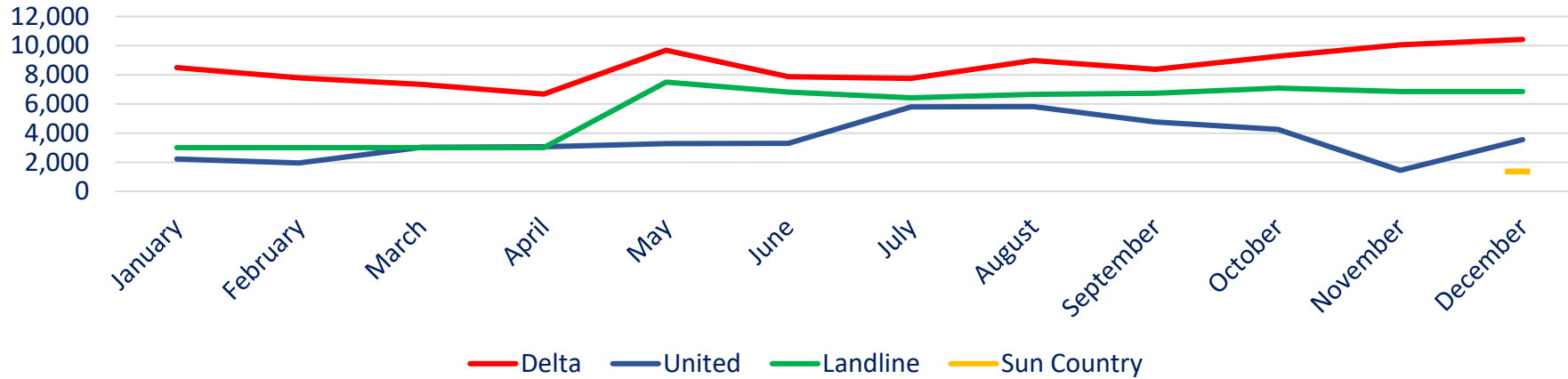
- YTD enplanements -31% (2019)
- December enplanements -18% (DEC 19)
- DL passengers -6% (DEC 19)
- UA passengers -36% (DEC 19)



Airline Market Share By Passengers

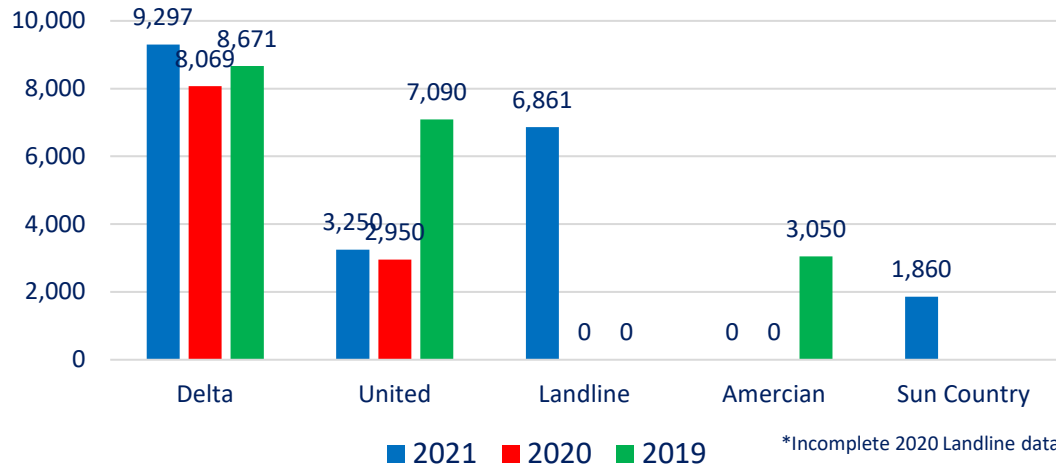


Total Seats

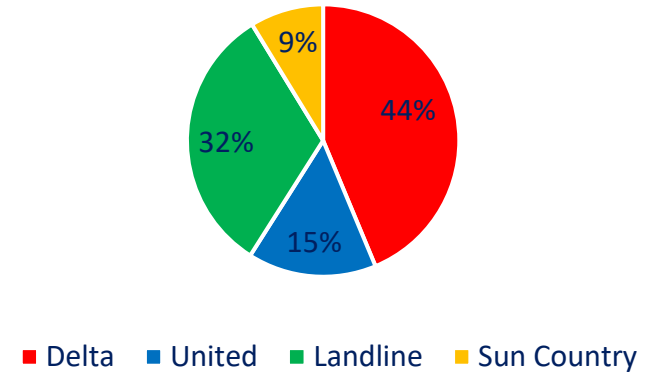


- DL 7% (DEC19)
- UA -54% (DEC19)
- ORD Capacity -67% (DEC19)
- MSP remains dominant w/ 76% of seats available (DL and Landline)
- ORD 15% of seats available

December Seats by Airline



Airline Market Share By Seats



Air Service New and Notes

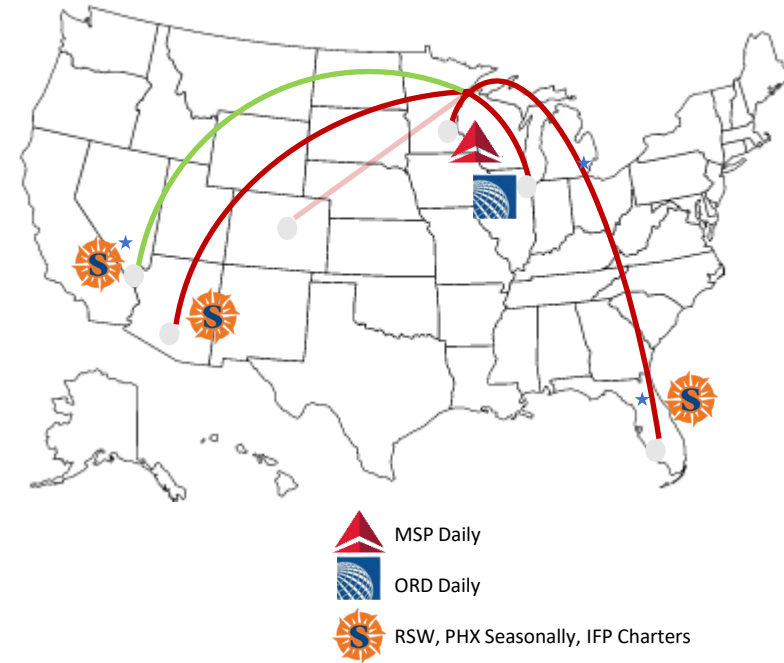
National Notes

- TSA screenings haven't topped two million since December 30
- 6% of flights were cancelled last week; down from more than 10% the week prior
- U.S. is projected to be short 12,000 pilots by 2023, according to an Oliver Wyman study.
- Delta: Exited 13 cities and 128 routes since 2019
- United: Exited 22 cities and 79 routes since 2019
 - UA will soon be announcing the closure of another 10 cities
- American: Exited 9 cities and 95 routes since 2019
- Delta capacity down 15% compared to 2019
- United capacity down 11% compared to 2019

Local Notes

- UA 2 freqs (140 seats) per day begins 3JAN22
- DL 4 freqs (226 seats) begins 11JAN22
- DL's total seats fluctuate throughout the schedule with aircraft gauges
- SY 2 freqs per week to RSW/PHX (372 seats per route)

Route Map



Daily Frequencies by Airline

