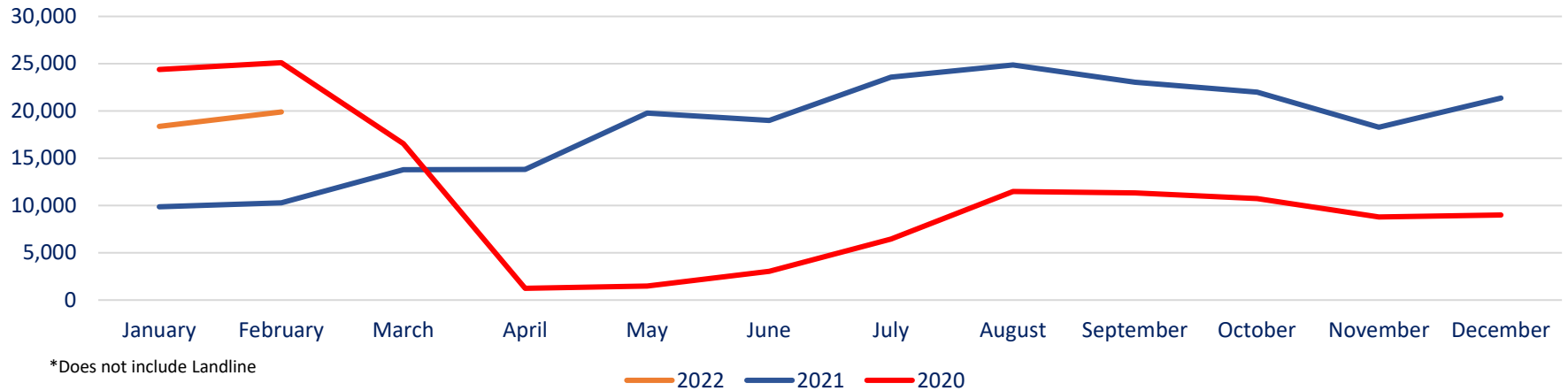


# Duluth International Airport Air Service Update

DAA Board Meeting  
15MAR22

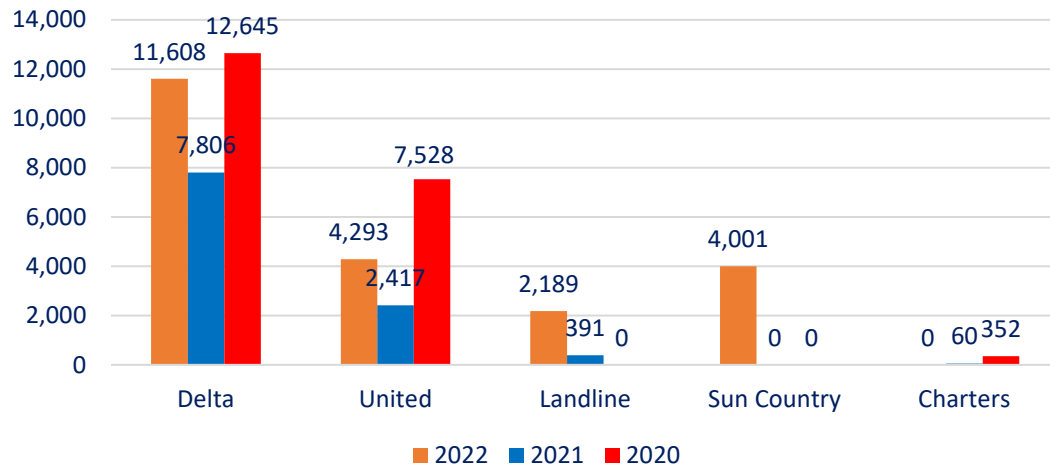


### Total Passengers

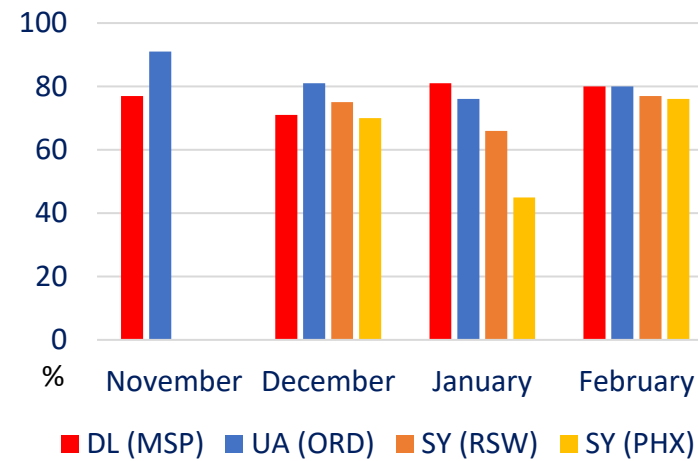


- YTD enplanements 8% (2019)
- February enplanements 99% (FEB21)
- DL passengers 49% (FEB21)
- UA passengers 77% (FEB21)

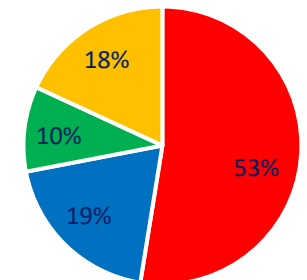
### February Passengers by Airline



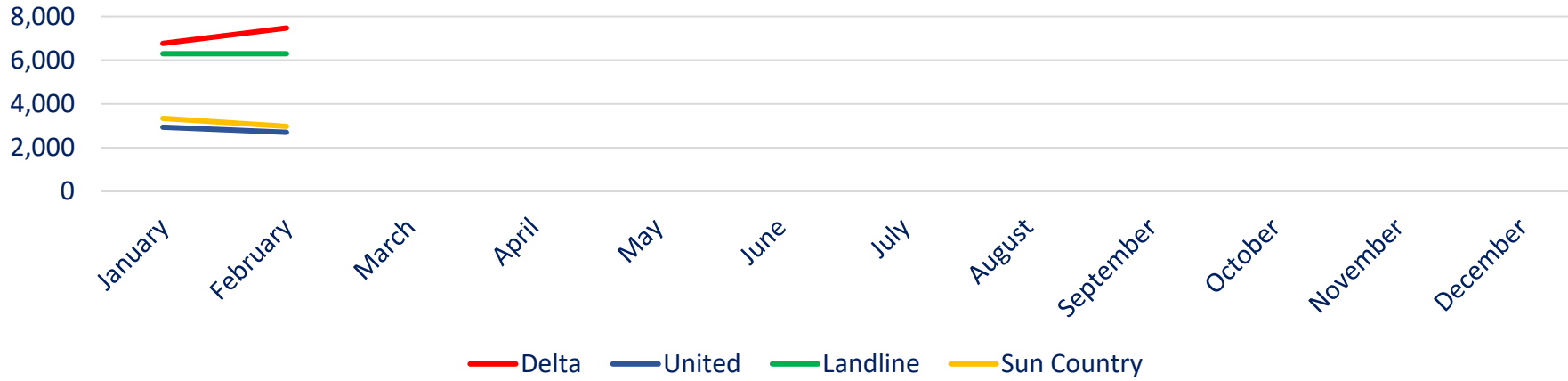
### Load Factor by Route/Airline



### Airline Market Share By Passengers

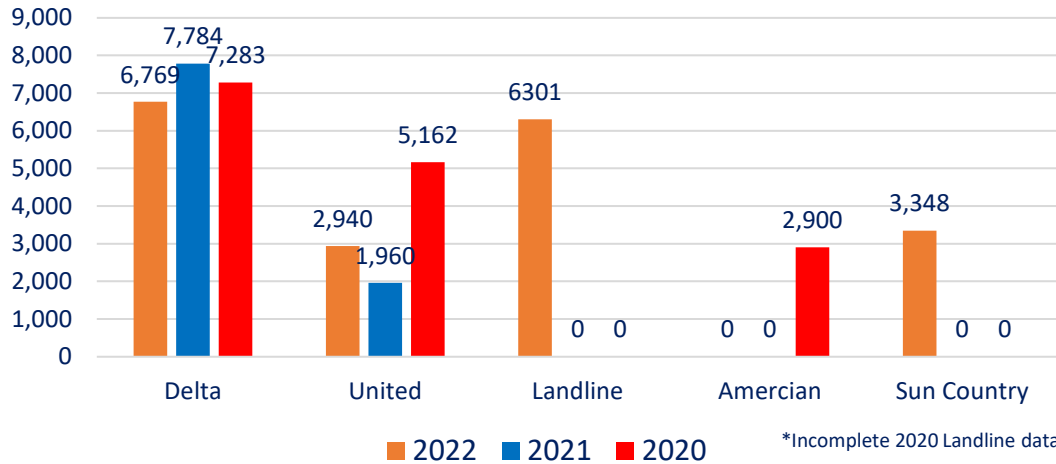


## Total Seats

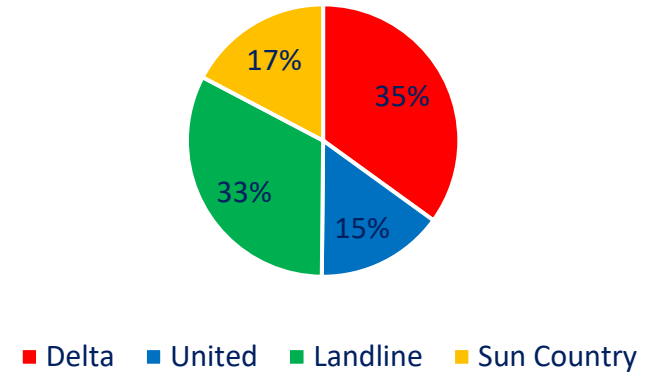


- DL -13% (FEB21)
- UA 50% (FEB21)
- SY/LL 50% of seats in the market

## February Seats by Airline



## Airline Market Share By Seats



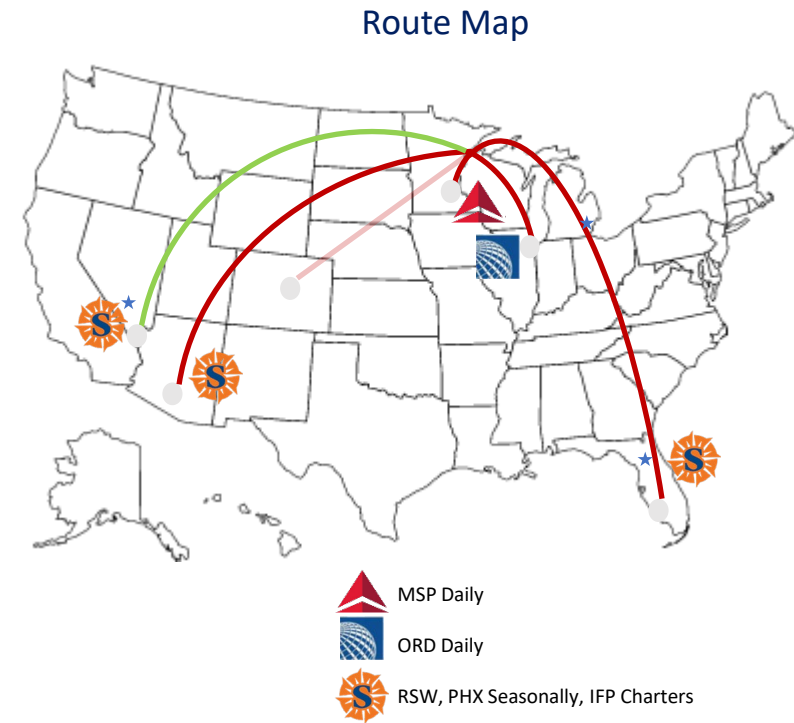
## Air Service News and Notes

### National Notes

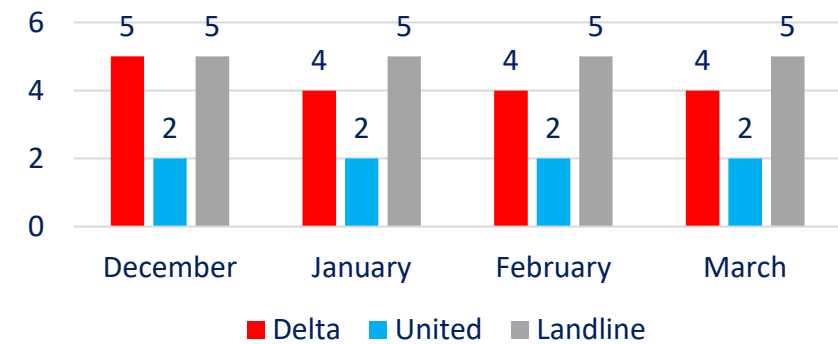
- DOT prohibits SkyWest from terminating EAS to 29 communities in 15 states
  - Included Eau Claire, WI (no MN airports)
- Allegiant Airlines will cut flights by 5%-10% in 2Q22 (oil prices)
- **Communities that have lost service next slide**

### Local Notes

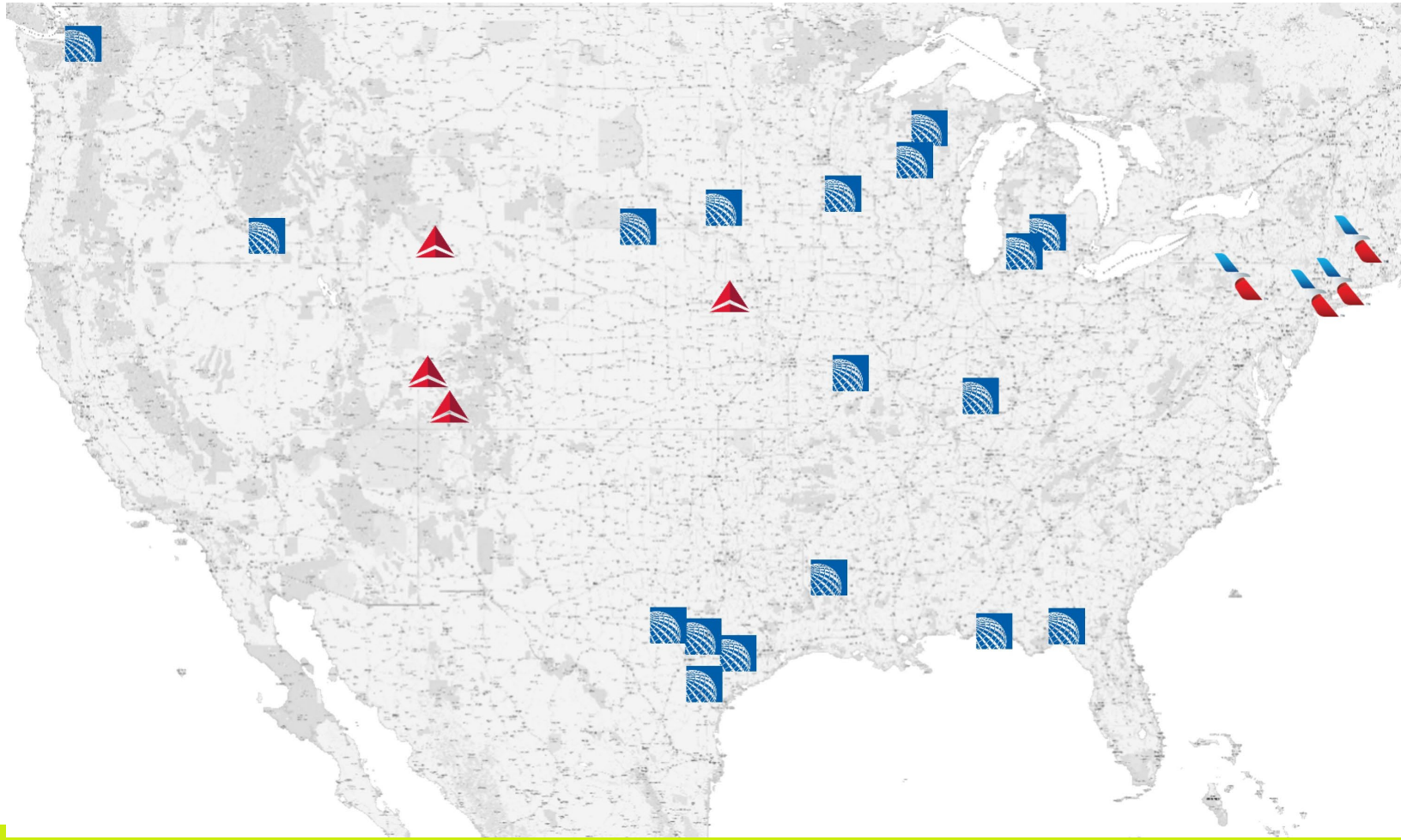
- UA 2 freqs (100 seats) as of 15MAR22
- UA 3 freqs per day expected in May
- DL 4 freqs (226 seats) as of 15MAR22
- DL 5 freqs (276 seats) select days of the week as of 14APR22
- SY 2 freqs per week to RSW/PHX (372 seats per route)



Daily Frequencies by Airline



# Communities That Lost Service Since March 2020



As of 15FEB22