

Ph2A PHASE INFORMATION



JULY 17 TO SEPT. 30

Phase 2A (shown in blue) includes reconstructing Taxiway A from west of the Monaco Ramp access to east of Taxiway A4, including pavement transition areas on the Tower Ramp. Reconstruction of Taxiway A4 between Taxiway A and Runway 9/27 Runway Safety Area (RSA) will also be completed as part of this phase.

Work elements will include:

- 1 Remove Taxiway A edge lighting
- 2 Reconstruct portions of Taxiway A from west edge of Monaco Ramp access to Taxiway C, including southern portion of Taxiway A4, Taxiway A will be 75 wide with 20-foot shoulders
- 3 New Taxiway A edge lighting
- 4 Painting new Taxiway A pavement markings
- 5 Replacement of airfield lighting circuits

See Phase 2B - Runway 9/27 RSA Work Sheet for additional information on airfield impacts during work inside the RSA



CONSTRUCTION SAFETY CONSIDERATIONS

- 6 Construction workers will be required to utilize a radio car to cross the active taxiway through the Tower ramp, adjacent to the construction limits
- 7 Pilots should use caution when taxiing on and around the Tower ramp or exiting the hangar area



CLOSURES

- 8 Taxiway A between Taxiway A3 and Taxiway C
- 9 Taxiway A4
- 10 Construction traffic will be crossing the Tower Ramp



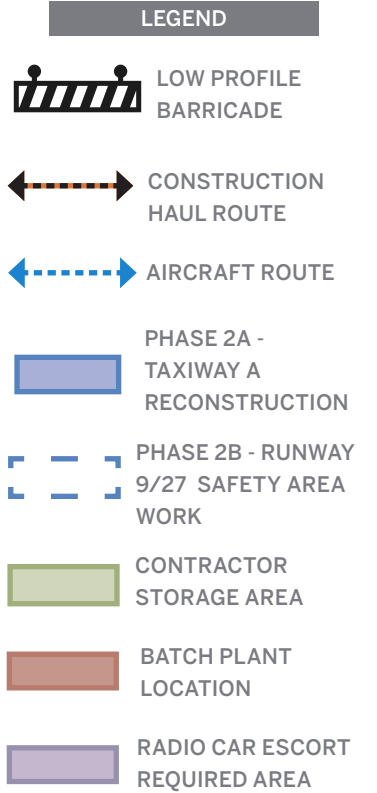
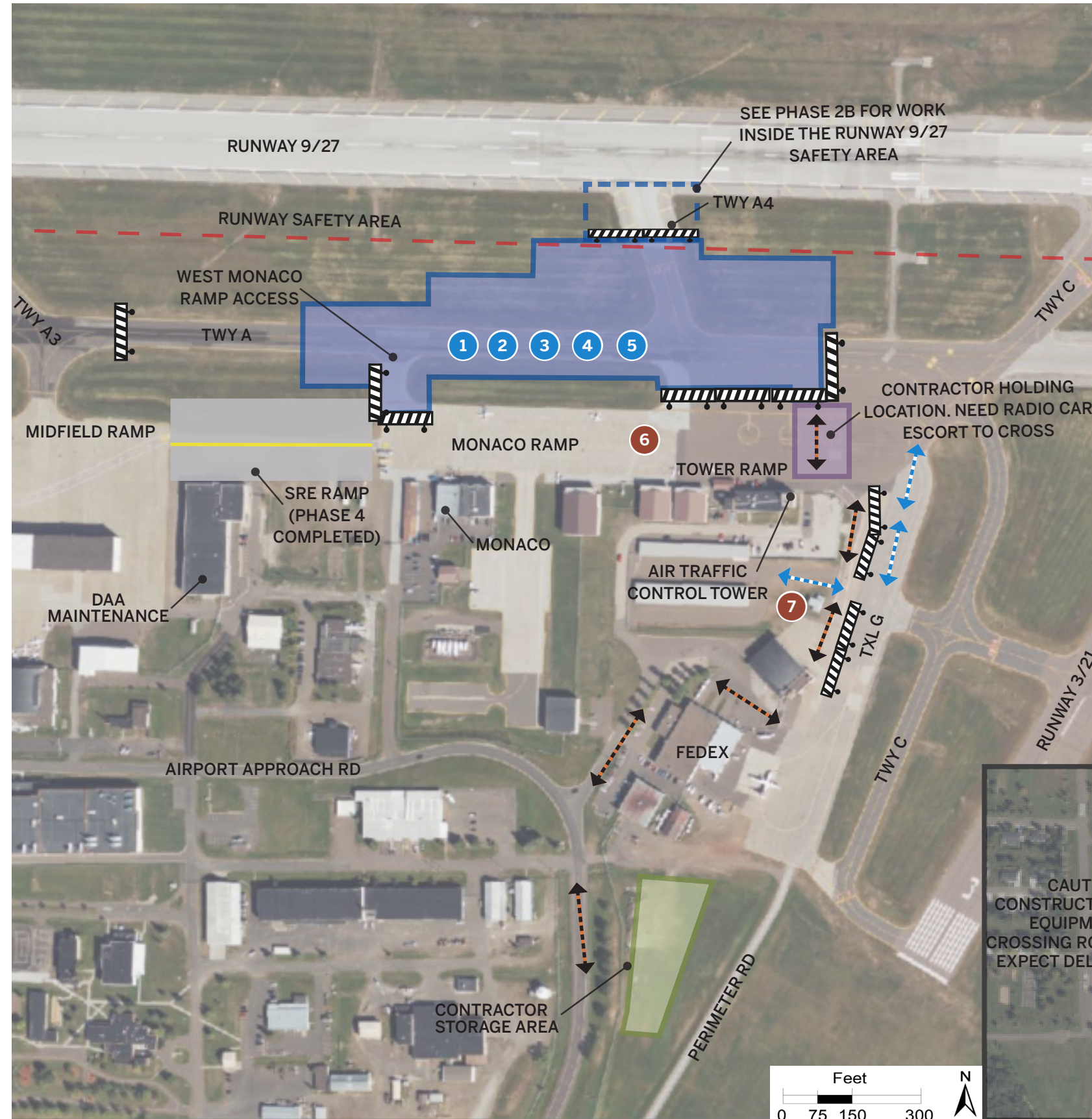
AVAILABLE AIRFIELD

- 11 Runway 9/27
- 12 Runway 3/21
- 13 Terminal, Midfield and Monaco ramps
- 14 Terminal, hangars, and miscellaneous facilities will be accessible



IAP INSTRUMENT APPROACH PROCEDURE IMPACTS (IAP)

- 15 There are no anticipated impacts to IAPs to either runway during Phase 2A



Ph2B
RSA Work

PHASE INFORMATION



7 NIGHT & 1 WEEKEND CLOSURE
BETWEEN JULY 17 TO SEPT. 30

Phase 2 Runway Safety Area (RSA) work includes reconstructing portions of Taxiway A4 inside the RSA during planned seven nightly Runway 9/27 closures. A 60-hour Runway 9/27 closure over one weekend will be required to complete the concrete paving inside the RSA. Communication will be provided to all tenants and users prior to the planned closure.

Work elements will include:

- 1 Remove Taxiway A4 edge lighting
- 2 Reconstruct Taxiway A4 between Runway 9/27 shoulder edge and Runway 9/27 RSA
- 3 New Taxiway A4 edge lighting
- 4 Painting of new Taxiway A4 pavement markings
- 5 Replacement of airfield lighting circuits



CONSTRUCTION SAFETY CONSIDERATIONS

- 6 Construction workers will be required to utilize a radio car to cross the active taxiway through the Tower ramp, adjacent to the construction limits
- 7 Pilots should use caution when taxiing on and around the Tower ramp
- 8 Contractor shall restore the Runway Safety Area prior to re-opening the Runway for aircraft operations at the conclusion of closures



CLOSURES

- 9 Taxiway A between Taxiway A3 and Taxiway C
- 10 Taxiway A4
- 11 Runway 9/27, seven nights scheduled. One 60-hour weekend closure of Runway 9/27 for concrete paving. Runway 9/27 will be available for taxi



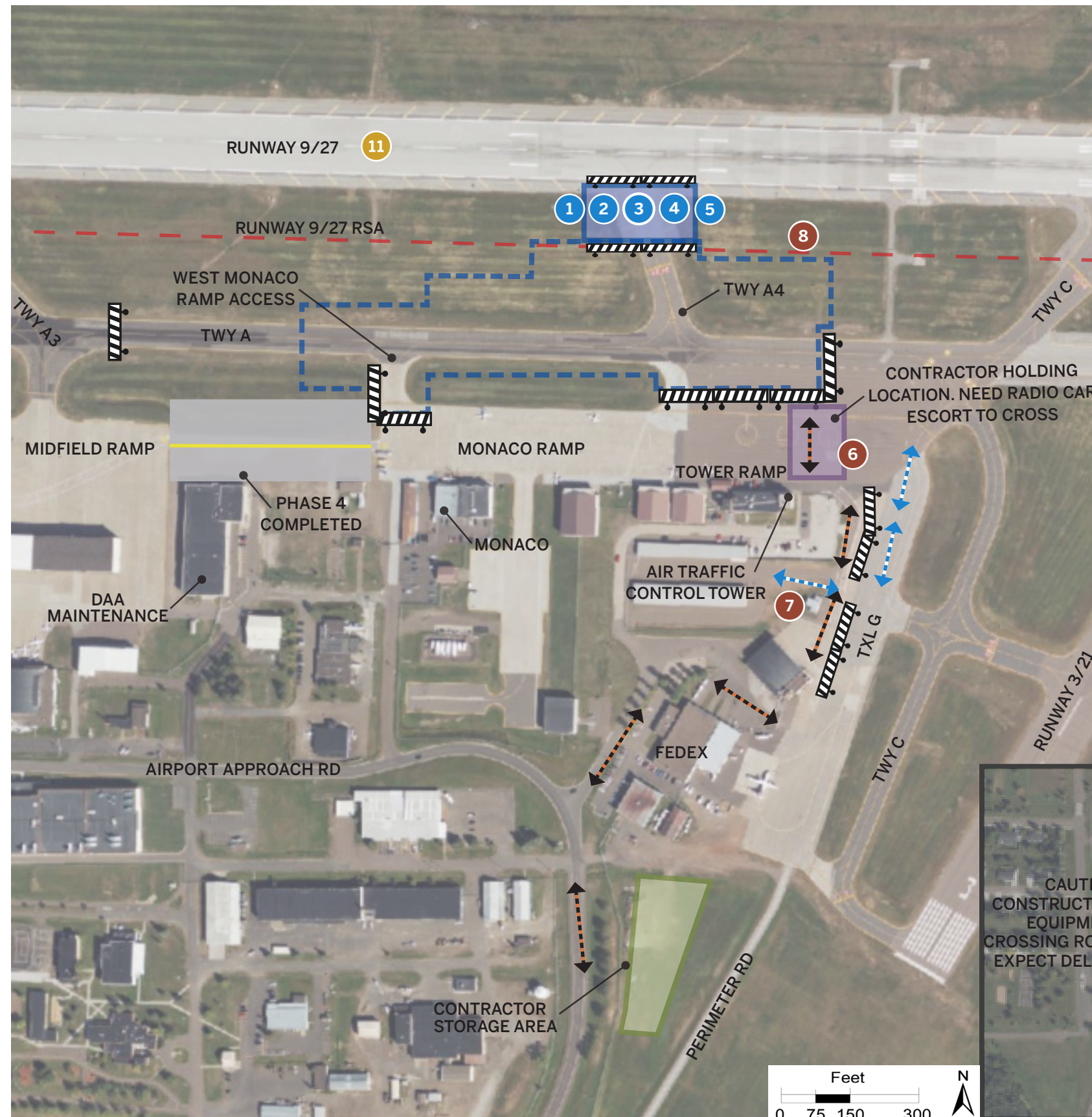
AVAILABLE AIRFIELD

- 12 Runway 9/27 periodically
- 13 Runway 3/21
- 14 Terminal, Midfield and Monaco ramps
- 15 Terminal, hangars, and miscellaneous facilities will be accessible



INSTRUMENT APPROACH PROCEDURE IMPACTS (IAP)

- 16 During the nightly Runway 9/27 closures and the 60-hour weekend closure, Runway 9/27 IAPs will be unavailable
- 17 There are no anticipated impacts to Runway 3/21's IAPs



LEGEND

- LOW PROFILE BARRICADE
- CONSTRUCTION HAUL ROUTE
- AIRCRAFT ROUTE
- PHASE 2A - TAXIWAY A RECONSTRUCTION
- PHASE 2B - RUNWAY 9/27 SAFETY AREA WORK
- CONTRACTOR STORAGE AREA
- BATCH PLANT LOCATION
- RADIO CAR ESCORT REQUIRED AREA

