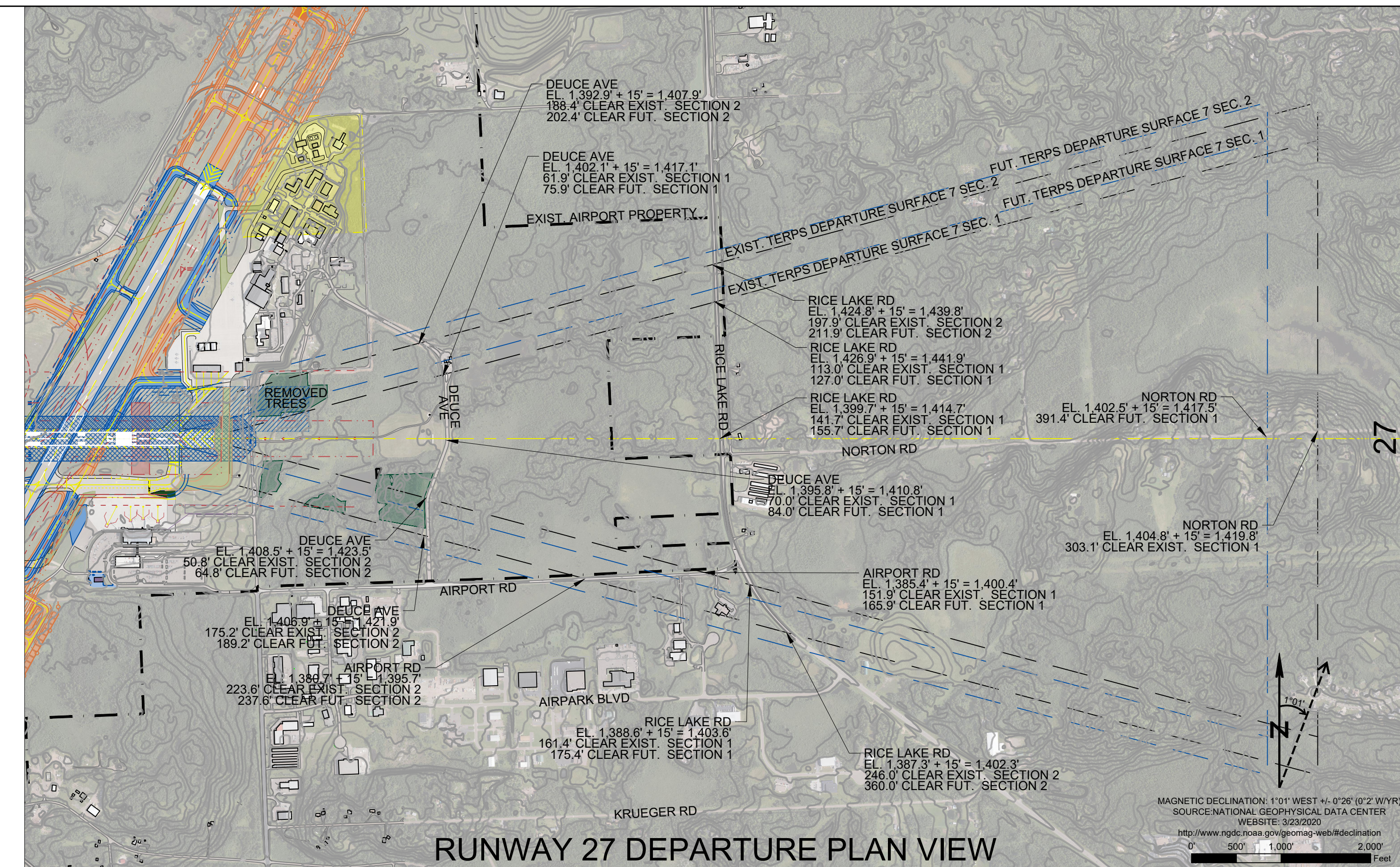
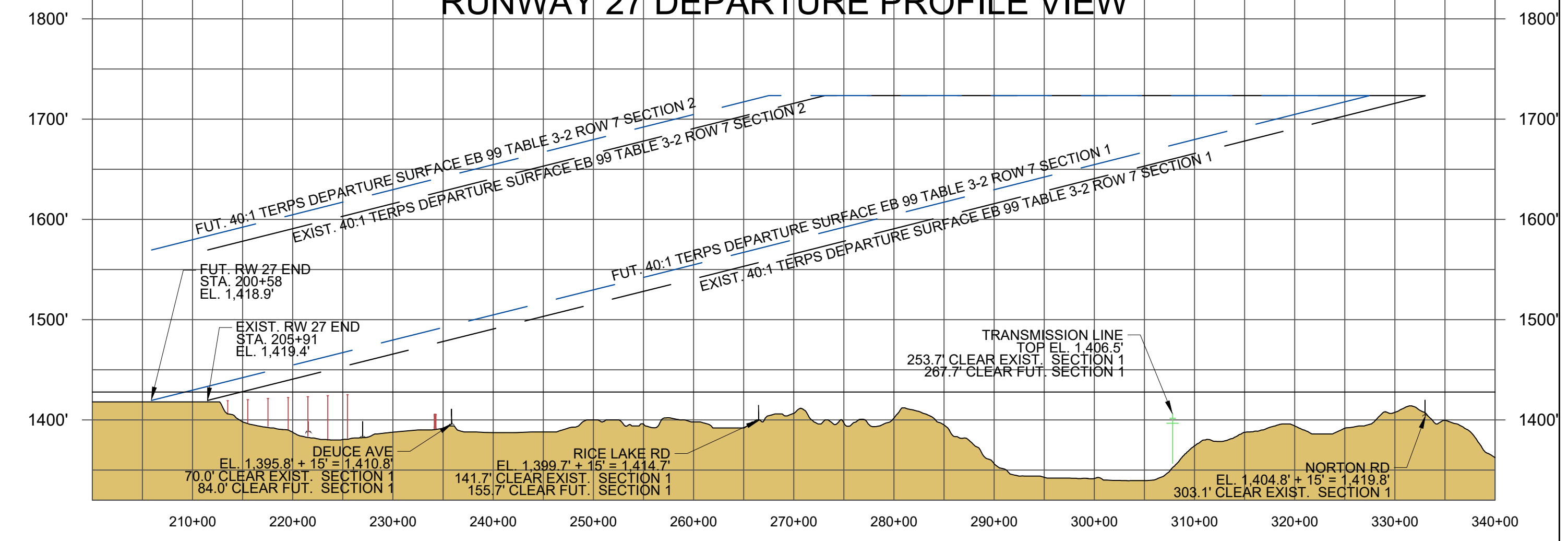
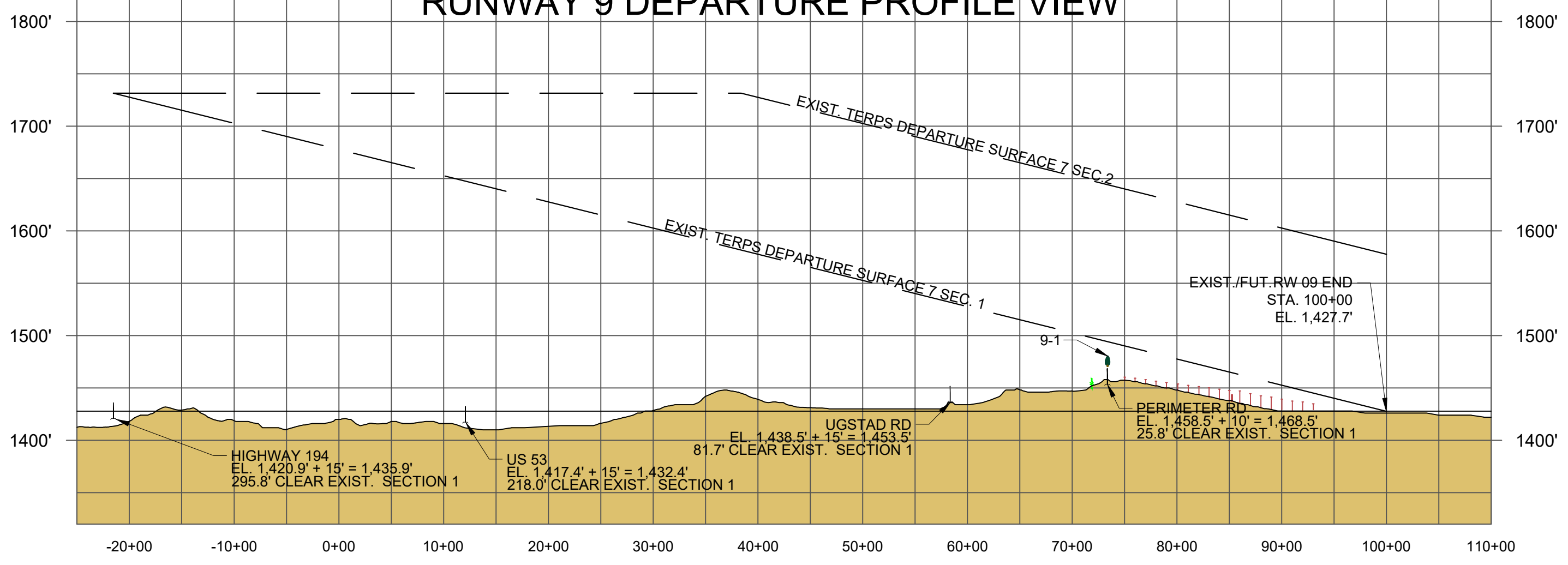


RUNWAY 9 DEPARTURE PLAN VIEW
RUNWAY 9 DEPARTURE PROFILE VIEW



RUNWAY 27 DEPARTURE PLAN VIEW
RUNWAY 27 DEPARTURE PROFILE VIEW



RUNWAY 09 DEPARTURE SURFACE SCHEDULE OF OBSTRUCTIONS						
KEY	DESCRIPTION	EXISTING/ULTIMATE	TOP ELEVATION	ALLOWABLE TERPS DEPARTURE ELEVATION	40:1 ROW 7 TERPS DEPARTURE	DISPOSITION/ TRIGGERING EVENT
9-1	TREE	EXISTING	1,480.8'	1,643.9'	163.6' CLEAR	NEXT CLEARING PROJECT

Due to the age of the data, trees that are within 5' of the approach surfaces are considered to be obstructions. Trees within 10' but adjacent to obstructions within 5' are included in groupings. Groupings included Departure Obstructions. See Sheet 16.
Source: SEH Drone Survey Fall 2020 & 2017 Martinez AGIS Survey

PLAN LEGEND			
EXISTING	FUTURE	ULTIMATE	ITEM
[Symbol]	SAME	SAME	FEE PROPERTY
[Symbol]	SAME	SAME	AVIGATION EASEMENT
[Symbol]	[Symbol]	[Symbol]	AIRFIELD PAVEMENT
[Symbol]	[Symbol]	[Symbol]	AUTOMOBILE PAVEMENT
[Symbol]	[Symbol]	[Symbol]	HANGARS/BUILDINGS
[Symbol]	[Symbol]	SAME	PAVEMENT REMOVAL
[Symbol]	[Symbol]	SAME	150/5300-13B TERPS APPROACH SURFACES
[Symbol]	[Symbol]	[Symbol]	PAPIS
[Symbol]	[Symbol]	SAME	WIND CONE
[Symbol]	[Symbol]	SAME	8' FENCE
[Symbol]	[Symbol]	SAME	GROUND CONTOURS
[Symbol]	[Symbol]	SAME	PREVIOUSLY REMOVED TREES

PROFILE LEGEND	
[Symbol]	ROAD PROFILE
[Symbol]	8' CHAINLINK FENCE
[Symbol]	TREE OBSTRUCTION
[Symbol]	ALSF LIGHT
[Symbol]	LOCALIZER
[Symbol]	TRANSMISSION LINE

RUNWAY 27 DEPARTURE SURFACE SCHEDULE OF OBSTRUCTIONS						
KEY	DESCRIPTION	EXISTING/ULTIMATE	TOP ELEVATION	ALLOWABLE TERPS DEPARTURE ELEVATION	40:1 ROW 7 TERPS DEPARTURE	DISPOSITION/ TRIGGERING EVENT
NO OBSTRUCTIONS						

Due to the age of the data, trees that are within 5' of the approach surfaces are considered to be obstructions. Trees within 10' but adjacent to obstructions within 5' are included in groupings. Groupings included Departure Obstructions. See Sheet 16.
Source: SEH Drone Survey Fall 2020 & 2017 Martinez AGIS Survey