

DULUTH INTERNATIONAL AIRPORT ZONING ORDINANCE (2021)

- ALL SAFETY ZONES:** No use shall be made of any land in any of the Safety Zones which creates or causes interference with the operation of radio or electronic facilities on the airport or with radio or electronic communications between the airport and aircraft, makes it difficult for pilots to distinguish between airport lights and other lights, results in glare in the eyes of pilots using the airport, impairs visibility in the vicinity of the airport, or otherwise endangers the landing, taking off, or maneuvering of aircraft.
- SAFETY ZONE 1:** Areas designated as Safety Zone 1 shall contain no buildings, temporary structures, exposed transmission lines, or other similar above-ground land use structural hazards, and shall be restricted to those uses which will not create, attract, or bring together an assembly of persons thereon. Permitted uses may include Agricultural Use, Resource Extraction Use, horticulture, animal husbandry, raising of livestock, wildlife habitat, light outdoor recreation (non-spectator), cemeteries, and automobile parking.
- SAFETY ZONE 2:**
Specific Prohibited Uses: The following classifications of building and structures as to use and occupancy are prohibited in Safety Zone 2:
 a. Group A Uses;
 b. Group E Uses;
 c. Group I-2 Uses; and
 d. Group R-1 Uses.
Density Limitation: Other uses not specifically prohibited by Section 3.1 must be on a site whose area is at least two and one-half (2.5) acres. Each use shall not create, attract, or bring together a site population in excess of 20 persons per acre during the same time period; density as calculated pursuant to the 2020 Minnesota State Building Code, or its successor.
- SAFETY ZONE 2.5:**
Specific Prohibited Uses: The following classifications of building and structures as to use and occupancy are prohibited in Safety Zone 2.5:
 a. Childcare or daycare centers;
 b. State licensed residential care facilities and housing with service establishments serving 7 or more persons;
 c. State licensed adult daycare facility serving 13 or more persons;
 d. State licensed group family daycare facility serving 13 or more children;
 e. Public or private school.
 f. Public or private Hospital.
- SAFETY ZONE 3:** Areas designated as Safety Zone 3 are only subject to the restrictions set forth in this Section 5(E)(1).

LAND USE

- C - COMMERCIAL
- I - INDUSTRIAL
- MU - MIXED USE
- O - OPEN SPACE
- P - PUBLIC
- R - RESIDENTIAL
- R - RURAL
- S - SHORELAND
- T - TRANSPORTATION & UTILITIES

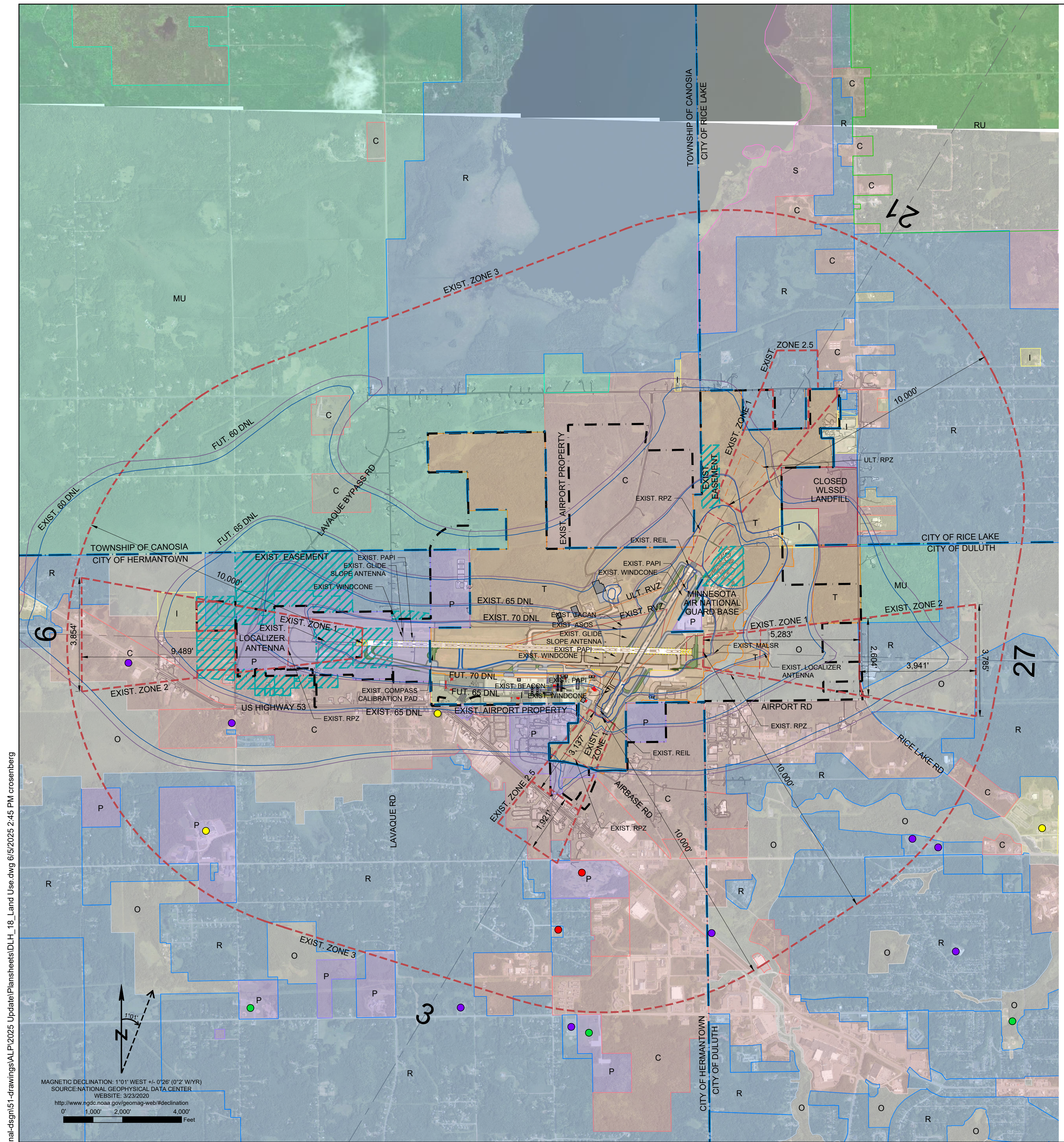
PUBLIC FACILITIES

- CEMETARY
- PARK
- SCHOOL
- CHURCH

SOURCE: CITY OF DULUTH UNIFIED DEVELOPMENT CHAPTER (UDC) (2021), CITY OF HERMANTOWN CODE OF ZONING ORDINANCES (2016), CITY OF RICE LAKE ZONING ORDINANCE (2020), ST. LOUIS COUNTY.

DULUTH INTERNATIONAL AIRPORT

- MUNICIPAL BOUNDARIES
- EXISTING NOISE CONTOURS
- FUTURE NOISE CONTOURS
- EXISTING RPZ
- ULTIMATE RPZ
- MNDOT ZONING (ZONES 1, 2, 2.5, 3)
- EXISTING AIRPORT PROPERTY
- EXISTING EASEMENT
- PHOTO EXISTING PAVEMENT
- FUTURE PAVEMENT
- FUTURE BUILDING
- ULTIMATE PAVEMENT
- FUTURE PAVEMENT / BUILDING REMOVAL



MAGNETIC DECLINATION: 1°01' WEST +/- 0'28" (0'2" WYR)
 SOURCE: NATIONAL GEOPHYSICAL DATA CENTER
 WEBSITE: 92232020
<http://www.ngdc.noaa.gov/geomag-web/#declination>
 0 1,000 2,000 4,000 Feet

X:\A\150733\150733-1\Drawings\ALP\2025 Update\ALP\2025 Update\Drawings\DLH_18_Land Use.dwg 6/5/2025 2:45 PM crosenberg



DULUTH INTERNATIONAL AIRPORT

DULUTH, MINNESOTA

AIRPORT LAYOUT PLAN

© 2025 Short Elliott Hendrickson Inc.

NO.	MARK	DATE	DESCRIPTION

DESIGNER: **MSS**
 DRAWN BY: **MLM**
 QA/QC: **KMN**
 DESIGN TEAM

LAND USE & AIRPORT ZONING

AIP NO. 3-27-0024-064-2019 SEH FILE NO. DULAI 150733 DATE: JUNE 10, 2025